

Genesis Chapter 3:15-24

Probably the most important part of the most important chapter in the whole Bible and all of literature!

1. Gives the proper diagnosis of man's condition - SIN

2. The Consequences have begun and continue
Guilt and shame, the blame game, disease and death

3. The foundation for the doctrines of our faith begin here ..
The battle between evil and good
The nature of God
It reveals the coming mediator to restore things
It shows the necessity of a blood sacrifice

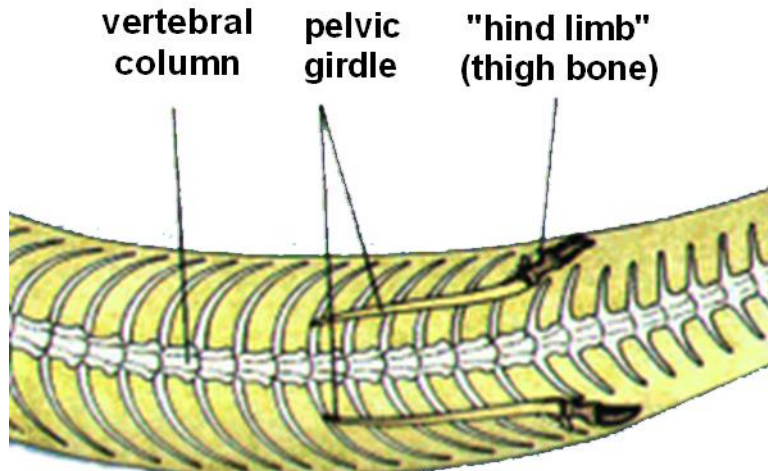
Genesis Chapter 3:15 a

So the LORD God said to the serpent, "Because you have done this, "Cursed are you above all livestock and all wild animals! You will crawl on your belly and you will eat dust all the days of your life."

Judgement for Satan straight away – no questions asked

What happened to the serpent ?

Vestigial organs ?



Genesis Chapter 3:15 a

The Punishment : The serpent visibly illustrates Satan's fate

So the LORD God said to the serpent, "Because you have done this, "Cursed are you above all livestock and all wild animals! You will crawl on your belly and you will eat dust all the days of your life."

1. **Crawl** – abased below walking animals
2. He tempted her with food – now **dust** in his
3. **Limited life span**



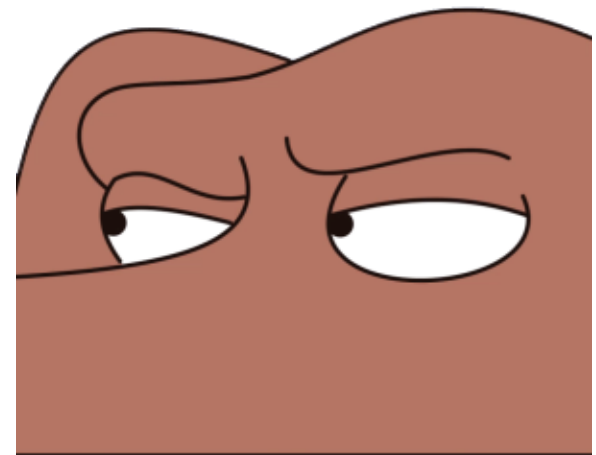
Genesis Chapter 3:15 b

" And I will put enmity between you and the woman, "

God acts – (grace & mercy)

Changes her attitude – (needs new birth)

Sees serpent as enemy – (visual reaction also)



Genesis Chapter 3:15 b

" And I will put enmity between you and the woman, and between your offspring and hers; "

There will be an on-going battle in future generations

His offspring - children of the devil ?? (John 8:44)



Genesis Chapter 3:15 b

" And I will put enmity between you and the woman, and between your offspring and hers; "

There will be an on-going battle in future generations

Her 'offspring' are believers
those who are trusting God



the woman will be the cause of his destruction

Genesis Chapter 3:15 b

" And I will put enmity between you and the woman, and between your offspring and hers; "

There will be an on-going battle in future generations



Since all humans born from Adam and Eve are a fallen race, unable to destroy Satan, the 'offspring' is ultimately the pure Saviour – born of woman, the Lord Jesus.

Genesis Chapter 3:15 b

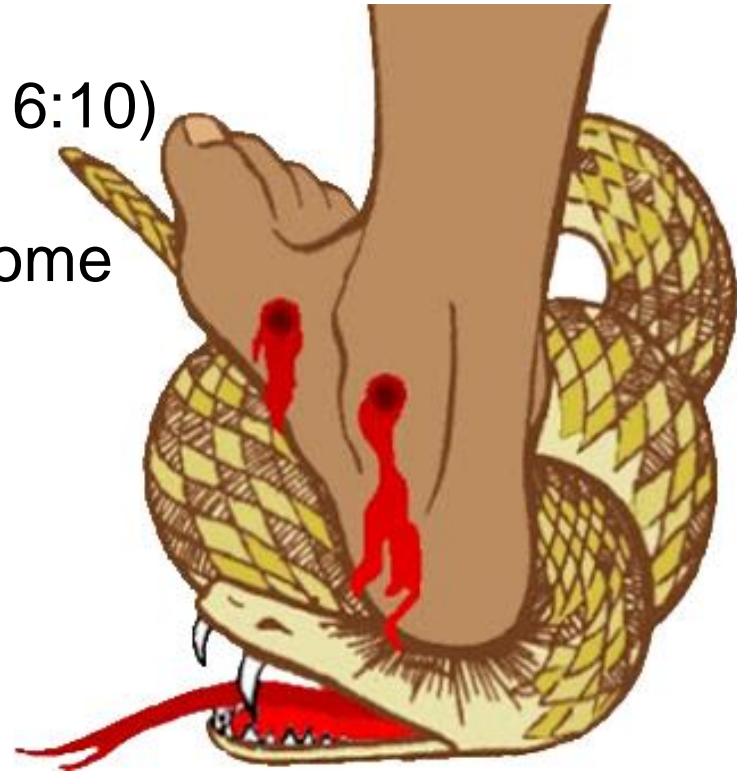
" he will crush **your** head,
and you will strike his heel."

Her offspring = the future Saviour
(heading God's redeemed - Romans 16:10)

Their relative positions determine outcome
The victory is set from the start !

Crushed head = fatal

"crushed" heel = injury



Genesis Chapter 3:15 b

" he will crush **your** head,
and you will strike his heel."

Fulfilment

Jesus' death and resurrection
(a crown of thorns – He bore the curse)
Satan's final doom Revelation 20:10



The serpent's judgement was heard by both Adam and Eve
in order to give them hope

To the woman he said, "I will make your pains in childbearing very severe; with painful labour you will give birth to children."

Domestic complications for her !!

**The consequences of sin - judgement vs. punishment ?
2 aspects for the woman...**

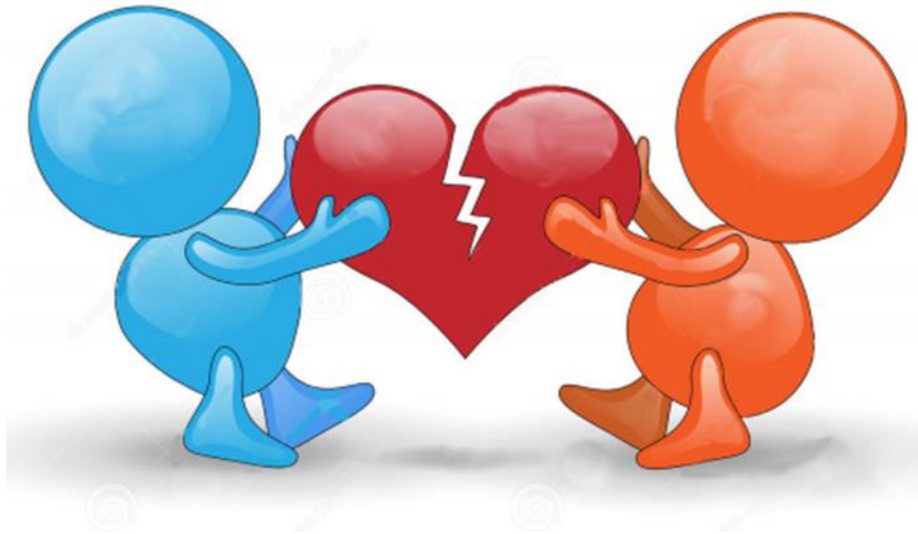
1. changes to natural process - pain in childbirth



To the woman he said,... "Your desire will be for your husband,
and he will rule over you."

Domestic complications for her !!

2. relationship problems in marriage cf. Genesis 4:7



To Adam he said, "Because you listened to your wife and ate fruit from the tree about which I commanded you, 'You must not eat from it,'

Work complications for him !!

God gives his reasons for the judgement

1. He abandoned his role as head of creation
2. He disobeyed God's clear command



You can't blame anybody else !

"Cursed is the ground because of you; through painful toil you will eat food from it all the days of your life."

Environmental complications for him !!

Nature changes because the caretaker of creation brought a curse on his domain.

Earth effects

harmful eg. 'natural disasters', resistant, less productive
cf. Romans 8:22

Therefore, work – becomes toil



"It will produce thorns and thistles **for you.**"

Harmful major genetic/structural changes occur

as seen in changes
to the serpent



Death of the weak
and
Survival of the strong

"and you will eat the plants of the field. By the sweat of your brow you will eat your food

Work complications for him !!

It's animal food now. He lost his gardening job
It's survival now!



"By the sweat of your brow you will eat your food until you return to the ground, since from it you were taken; for dust you are and to dust you will return."

He is dying – returning to his origin
(Adam has fallen from his high position)



Adam named his wife Eve,
because she would become the mother of all the living.

He **believed** the promise
God gave.

He showed it by
re-naming her “Life” Eve.

Through her there would be a future.



The LORD God made garments of skin for Adam and his wife and clothed them

Mercy

– a proper covering for **them** – fig leaves gone!

God 'made' ? (cf. Solomon 'built' the temple)

or

God given instructions
for them to make them?



The LORD God made garments of skin for Adam and his wife and clothed them

God given instructions

Animal sacrifice necessary – to provide a ‘covering’ for guilt

**This prefigures
the sacrificial system and its fulfillment in the Messiah**



And the LORD God said, "The man has now become like one of us, knowing good and evil.

**Note the conversation “within God”
pointing to plurality of persons**

They are now like God in “knowing”
but from a sinner’s perspective



"He must not be allowed to reach out his hand and take also from the tree of life and eat, and live forever."

Tree of life is real but also symbolic
There was nothing magical in it
but the connection to God's words makes it effective.



"He must not be allowed to reach out his hand and take also from the tree of life and eat, and live forever."



God's protective intervention

- 1,** At present they had no "right" to tree.
Only for those saved and perfected (Rev. 22:14)
So to take it for themselves would be a sin.
- 2,** If they had eaten they would be locked into their sinful state forever = 2nd death

So the LORD God banished him from the Garden of Eden to work the ground from which he had been taken.

A new phase of existence begins outside Paradise
(no place for earthly sinners)



The emphasis is on his lowly state.
Adam is now an individual no longer representing all of mankind

After he drove the man out, he placed on the east side of the Garden of Eden cherubim and a flaming sword flashing back and forth to guard the way to the tree of life.

Locked out !



and guarded by powerful angels until God's timing to open

Why were they positioned on the east side?

Is there anything special about the east side?



Rev. 22:2



We see God's anger for the first time

We see his justice – sin is punished

**We see his grace – he takes the initiative for
mankind**

**We see his mercy – in providing hope and a
deliverer**